

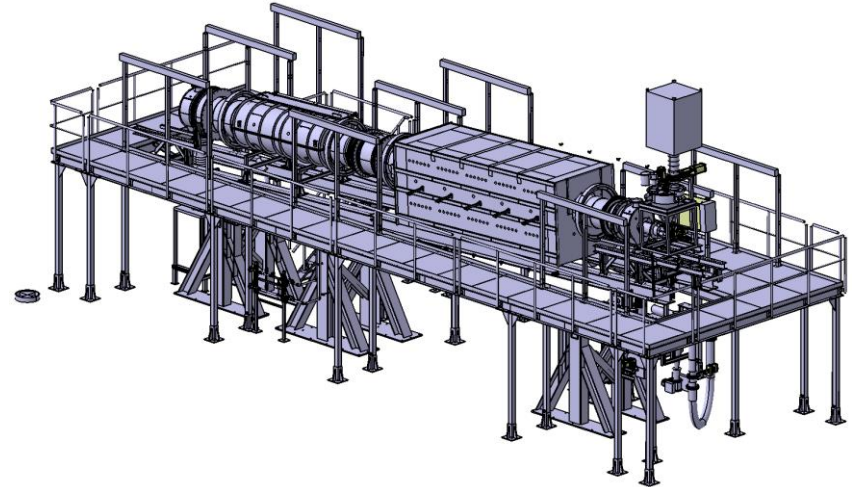
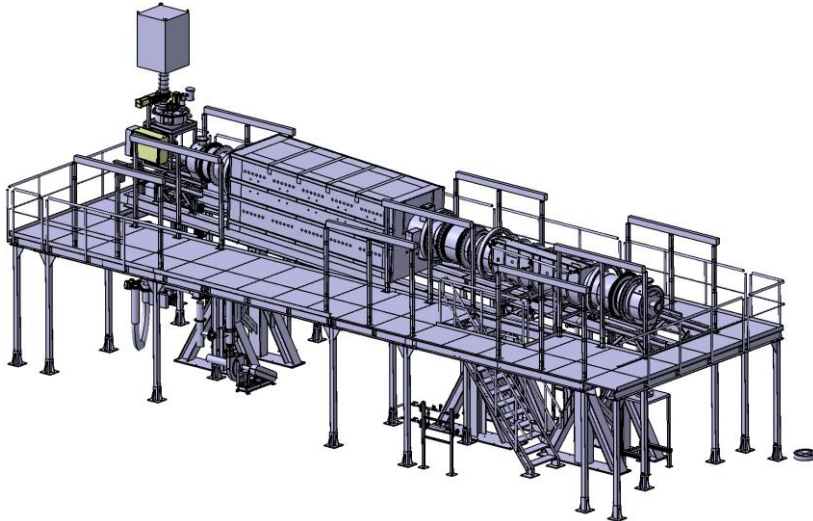


CLIMATE CONTROL SYSTEMS

**INDIRECT ELECTRICALLY HEATED ROTARY KILN MOD. DRA 4,7/60 – E – 115
WITH ATTACHED WATER COOLING PIPE MOD. CPK 2,5/72 – W**

GENERAL INFORMATION

- Indirect electrically heated rotary kiln Mod. DRA 4,7/60 – E – 115 with attached water cooling pipe Mod. CPK 2,5/72 – W
- For heat treatment of a customized product
- Condition: as new
- Offer for immediate sale



SPECIFICATIONS

The offered electrically heated rotary kiln is used for heat treatment of a customized product.

By adjusting the rotation speed and inclination of the equipment, the flow (quantity and time) of the product can be influenced. The heating is done by SiC rods and is divided into 3 control groups.

The foundation must be a concreted, screeded, flat hall floor.

The plant complies with the following directives:

- EC Machinery Directive 2006/42/EC
- EC Electromagnetic Compatibility 2014/30/EU

Technical data rotary kiln		
Total plant length	17,5	m
Total plant width	5	m
Total plant height	8	m
Total rotary kiln length approx.	12.800	mm
Rotary kiln width approx.	2.300	mm
Rotary kiln height incl. steel structure approx.	8.000	mm
Sinter pipe		
Rotary kiln length heated area approx.	8.200	mm
Insulated housing (=heated length) approx.	4.700	mm
Pipe diameter, inside	596	mm
Pipe wall thickness	10	mm
Concentricity tolerances at the pipe ends	±5	mm
Rotary pipe material according to specification	2.4633	
Cooling pipe		
Rotary kiln length cooled area approx.	5.100	mm
Double shell housing (=cooled length) approx.	2.500	mm
Pipe diameter, inside	720	mm
Pipe wall thickness	10	mm
Concentricity tolerances at the pipe ends	±5	mm
Rotary pipe material according to specification	1.4841	

Technical data rotary kiln		
Rotations rotary kiln	0,5 - 5	min ⁻¹
Tilt adjustment	0,5 - 3	°
Maximum pipe outer wall temperature, measured at the pyrometer	1.150	°C
Maximum heating zone temperature	1.200	°C
Heating medium	electrical	
Installed power approx. (Values apply to max. product input of 200 kg/h)	500	kW
Electrical connected load approx. (Values apply to max. product input of 200 kg/h)	740	kVA
Current type	400/230 50	V Hz
Heating principle	SiC rods	
Control areas	5	
Safety equipment	According to EN 60519 and EN 60204	
Insulation	High temperature wool	
Exhaust process gases	Cooling fan	
Exhaust gas cleaning Cyclone Further exhaust gas cleaning	included on site	
Cooling medium	Water	

MASSFLOW CURVES

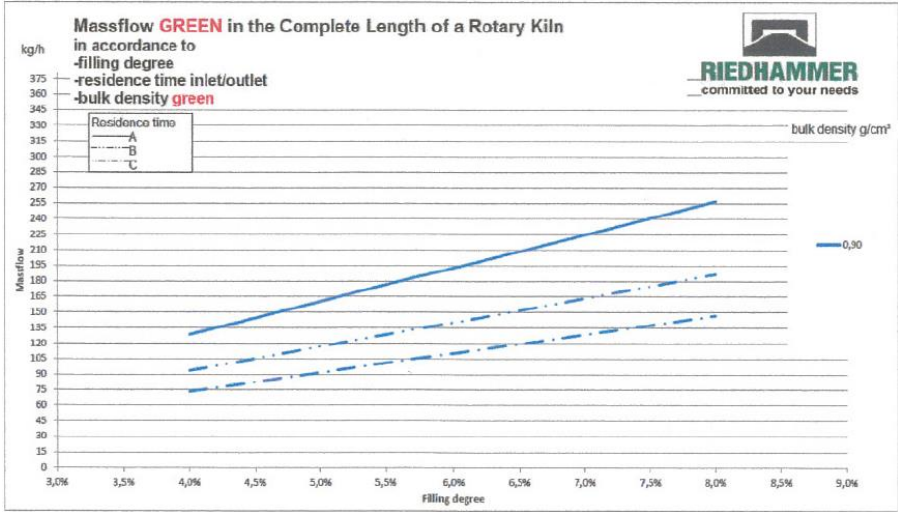
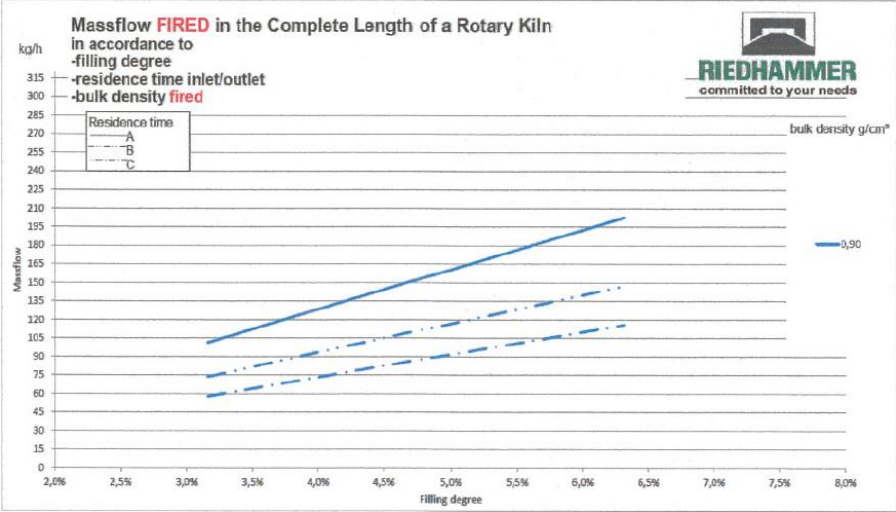
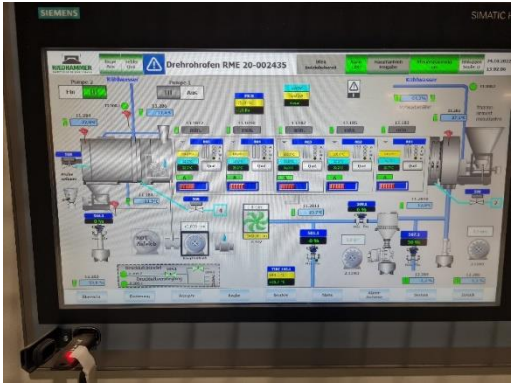


PHOTO-OVERVIEW



SWITCH CABINETS

